

70" Ducted Fume Hood

Model # SS-370-E



Sentry Air's **70" Wide Ducted Fume Hood** integrates high-quality materials and superior design to provide a compact and lightweight exterior-ducting fume hood solution. This benchtop unit features unique hinged folding side panels, a high-density polyethylene base, a clear polycarbonate top, and a polycarbonate hinged sloping front lid. Typically, exhaust hoods are utilized in *chemical laboratories – especially when evaporating large amounts of volatiles organics, chemicals with low odor thresholds, heavy powder and capsule filling, and a variety of other processes that require exterior fume exhaust.*

The **70" Ducted Fume Hood** provides an effective and economical tool for air quality enhancement in many commercial, chemical, medical, laboratory, and industrial applications.

This unique **Ducted Fume Hood** can be customized in numerous ways including:

- Material options (e.g. metal, esd-safe, PVC)
- Size options (width, height, depth, access area dimensions)
- Custom cutouts (e.g. sink, machinery, microscopes)
- Dual-entry configuration
- Custom illumination options (e.g. black light)
- Accessories for hanging equipment

This unit includes an 8" exhaust collar and does not include ducting or a fan. Ask Sentry Air Systems Applications Specialists for assistance in selecting a suitable fan. Sentry Air Systems also manufactures fume hoods that include a fan and filtration media (Ductless Fume Hood).

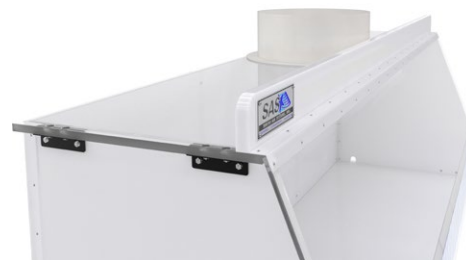
Disclaimer: The end user is ultimately responsible for conforming to all applicable exhaust ventilation regulations. Consult local, state, and federal agencies regarding the suitability of your application prior to venting fumes to the environment. It is your ultimate responsibility to ensure the safety and suitability of your application. For more information, contact a local safety professional (certified industrial hygienist) for conformance and suitability.

Product Features

- **Includes:** LED light, 8" exhaust collar, and anti-static vinyl curtains
- **Optional:** stainless steel construction
- **Standard Sizes:** 18", 24", 30", 40", 50", 60", and 70"
- Custom sizes and modification options



70" Ducted Fume Hood



Side view of the 70" Ducted Fume Hood showing the 8" Exhaust Collar.



Ducted Fume Hoods provide fume extraction for various applications including chemicals & lab processes.



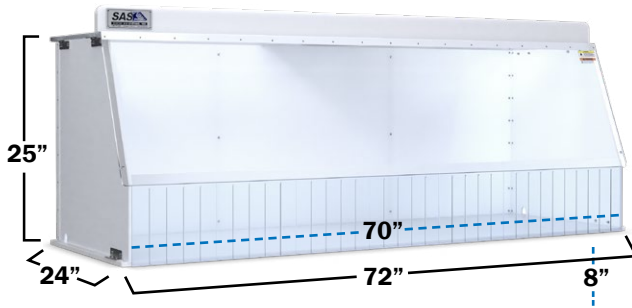
21221 FM 529 Rd, Cypress, TX 77433
1.800.799.4609 • sales@sentryair.com
www.sentryair.com

Exhaust Fume Hood

Product Specifications



FRONT VIEW



Dimensions are approximate. Shown with outer dimensions.

BACK VIEW - EXHAUST COLLAR



Hood Dimensions (D x W x H)	Outer: 24" x 72" x 25" Interior: 23.5" x 70" x 24" Access Area: 8" x 70"
Hood Material	Sides: 0.25" white acrylic Base: 0.5" white high density polyethylene Top: 0.5" clear polycarbonate Front: 0.25" clear polycarbonate
Exhaust Connection	8" exhaust collar <i>Ducting & Fan are not included with this product.</i>
Weight (approximately)	105 lbs
Maximum Operating Temperature	Not to exceed 170° F
Warranty	Limited two-year warranty from date of shipment on defects due to materials or workmanship.
US Patent	#5,843,197



21221 FM 529 Rd
Cypress, TX 77433
1.800.799.4609
sales@sentryair.com

www.sentryair.com